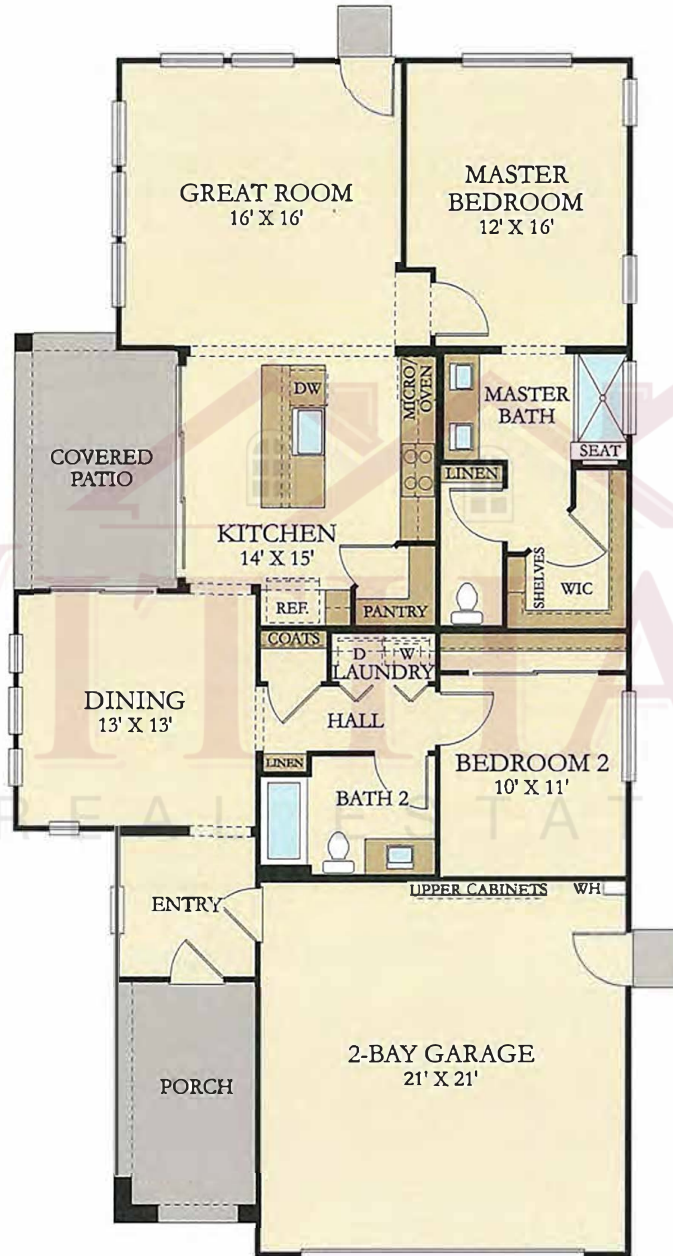


PRELIMINARY

Mosaic at Heritage El Dorado Hills

THE SAPPHIRE

APPROX. 1,444 SQ. FT. • 2 BEDROOMS • 2 BATHROOMS • 2-BAY GARAGE



Plans and elevations are artist's renderings and may contain options which are not standard on all models. Lennar reserves the right to make changes to these floor plans, specifications, dimensions and elevations without prior notice. Stated dimensions and square footage are approximate and should not be used as representation of the home's precise or actual size. Any statement, verbal or written, regarding "under air" or "finished area" or any other description or modifier of the square footage size of any home is a shorthand description of the manner in which the square footage was estimated and should not be construed to indicate certainty. Renderings are conceptual in nature and merely an artist's rendition. These renderings are solely for illustrative purposes and should never be relied upon. Buy size may vary from home to home and may not accommodate all vehicles. Copyright © 2018 Lennar Corporation. All rights reserved. Lennar and the Lennar logo are U.S. registered service marks or service marks of Lennar Corporation and/or its subsidiaries. Lennar Homes of California, Inc. License #728102. Lennar Sales Corp. - Broker. DRE License #01252753. CalAtlantic Group, Inc. California Real Estate License No. 01138346. Ryland Homes of California, Inc. 00352900. CalAtlantic Group, Inc., 641665. Ryland Homes of California, Inc., 54648. Standard Pacific of Orange County, Inc., 923048. BMR Construction, Inc., 830955. 2/19

LENNAR