

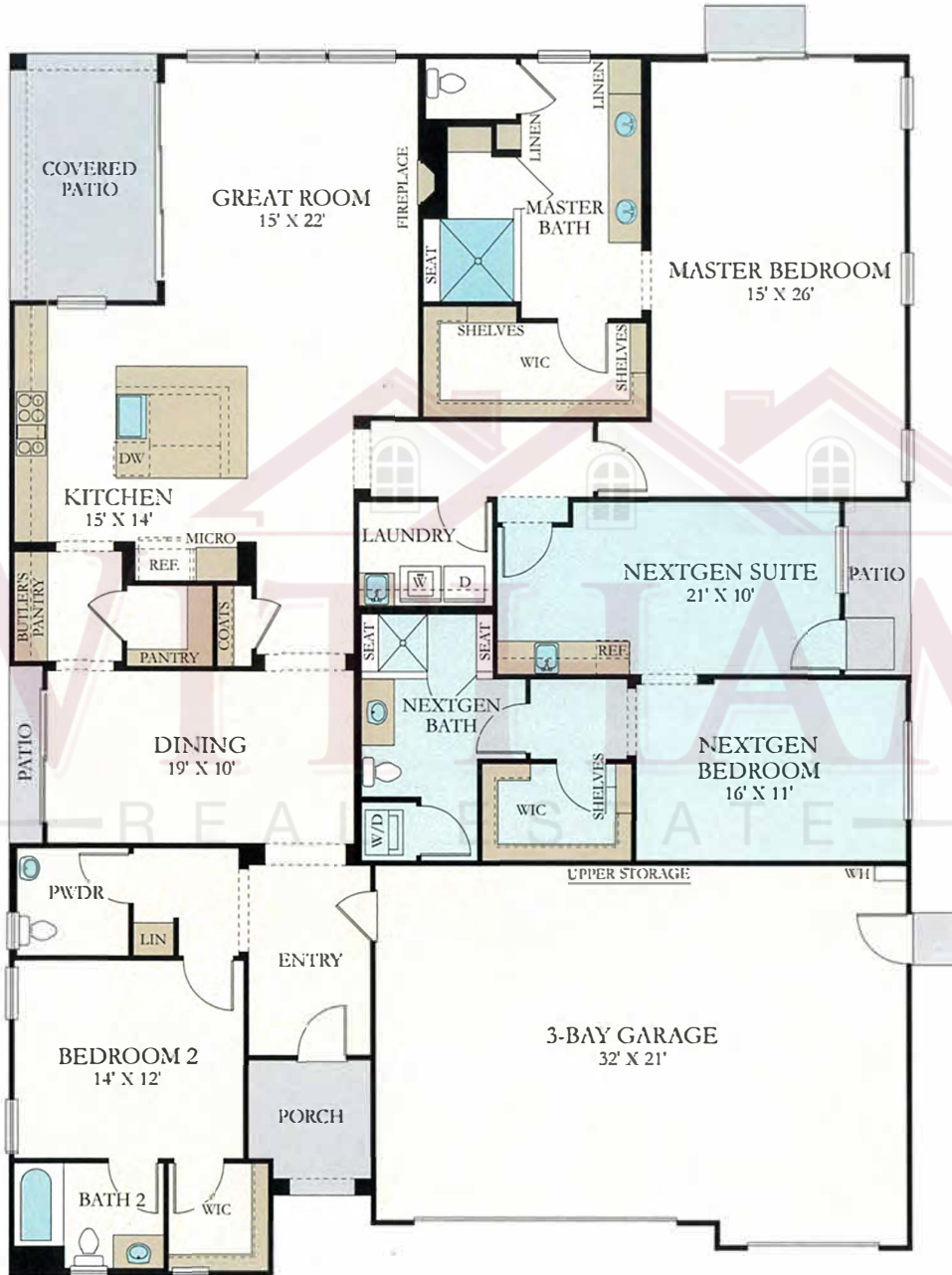
PRELIMINARY

Estates at Heritage El Dorado Hills

THE MONTICELLO

MAIN HOME: APPROX. 2,955 SQ. FT. • 2 BEDROOMS • 2.5 BATHROOMS • 3-BAY GARAGE

NEXT GEN SUITE: 1 BEDROOM • 1 BATHROOM • PRIVATE LIVING AREA & KITCHENETTE • PRIVATE ENTRANCE



LENNAR

Plans and elevations are artist's renderings and may contain options which are not standard on all models. Lennar reserves the right to make changes to these floor plans, specifications, dimensions and elevations without prior notice. Stated dimensions and square footage are approximate and should not be used as representation of the home's precise or actual size. Any statement, verbal or written, regarding "under air" or "finished area" or any other description or modifier of the square footage size of any home is a shorthand description of the manner in which the square footage was estimated and should not be construed to indicate certainty. Renderings are conceptual in nature and merely an artist's rendition. These renderings are solely for illustrative purposes and should never be relied upon. Bay size may vary from home to home and may not accommodate all vehicles. Copyright © 2019 Lennar Corporation. All rights reserved. Lennar, the Lennar logo, Next Gen - The Home Within A Home and the Next Gen logo are U.S. registered service marks or service marks of Lennar Corporation and/or its subsidiaries. Lennar Homes of California, Inc. License #728102. Lennar Sales Corp. - Broker, DRE License #01252753. CalAtlantic Group, Inc. DRE License #02058246. Ryland Homes of California, Inc. 00352900. CalAtlantic Group, Inc., 641665. Ryland Homes of California, Inc., 54648. Standard Pacific of Orange County, Inc., 923048. BMR Construction, Inc., 830955. 1/19

